

The background of the entire page is a textured artwork. The left side features stylized flowers with dark brown petals and white centers, set against a warm, orange-brown background. The right side shows a rugged, layered rock formation in shades of brown and orange, with green foliage at the base. The overall style is painterly and textured.

Orange Dust

SPECTRUM INTRODUCTION

GET IN TOUCH
k2office.com.au

Paul Besanko - General Manager
paulb@k2office.com.au
0409 695 340

K2 OFFICE PTY LTD
17-19 Myuna Street, Regency Park, South Australia 5010



Alice Ocean Blue

OD-ALMB-OB
Alice Medium Back Ocean Blue Chair

OD-ALHB-OB
Alice High Back Ocean Blue Chair



Alice Red Ochre

OD-ALMB-RO
Alice Medium Back Red Ochre Chair

OD-ALHB-RO
Alice High Back Red Ochre Chair



Katherine Ocean Blue

OD-KAMB-OB
Katherine Medium Back Ocean Blue Chair

OD-KAHB-OB
Katherine High Back Ocean Blue Chair



Katherine Red Ochre

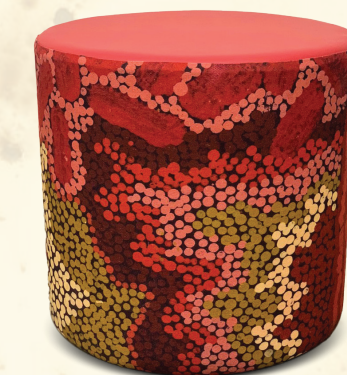
OD-KAMB-RO
Katherine Medium Back Red Ochre Chair

OD-KAHB-RO
Katherine High Back Red Ochre Chair



Eva Ocean Blue

OD-EVOT-R45-OB
(Eva Ocean Blue Ottoman Chair)



Eva Red Ochre

OD-EVOT-R45-RO
Eva Red Ochre Ottoman Chair



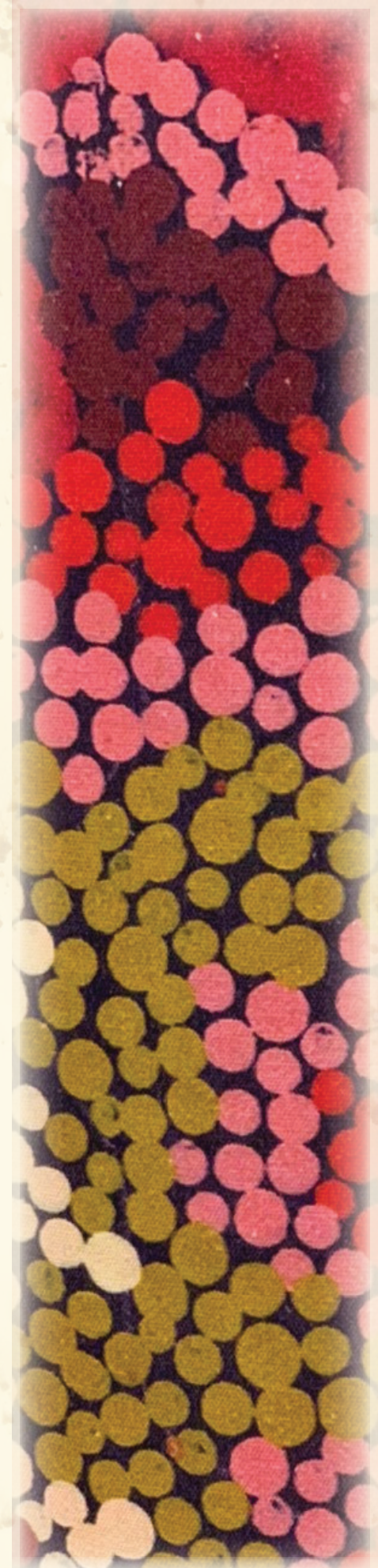
Artist: Stephen Jupurrurla Nelson

This story comes from a big hill called Mawurriji, west of Yuendumu and north of Pikilyi (Vaughan Springs.) A group of Jangampa ancestors resided there. Every night they would go out in search of food. Their hunting trips took them to Wirli and Wanapirdi, where they found pamapardu (flying ants.)



Artists: Damien & Yilpi Marks

This is a teaching painting, describing a dry season in Mount Liebig, in the Northern Territory. Women and children collect bush potatoes and prepare for inma (ceremony.) A man, Wati, sits down with his waru (spear.) Controlled burnings are taking place as the spinifex is dry, and this means good fruits can grow.





Alice Eucalyptus Green

OD-ALMB-EG
Alice Medium Back Eucalyptus Green Chair

OD-ALHB-EG
Alice High Back Eucalyptus Green Chair



Alice Golden Orange

OD-ALMB-GO
Alice Medium Back Golden Orange Chair

OD-ALHB-GO
Alice High Back Golden Orangen Chair



Katherine Eucalyptus Green

OD-KAMB-EG
Katherine Medium Back Eucalyptus Green Chair

OD-KAHB-EG
Katherine High Back Eucalyptus Green Chair



Katherine Golden Orange

OD-KAMB-GO
Katherine Medium Back Golden Orange Chair

OD-KAHB-GO
Katherine High Back Golden Orange Chair



Eva Eucalyptus Green

OD-EVOT-R45-EG
Eva Eucalyptus Green Ottoman Chair



Eva Golden Orange

OD-EVOT-R45-GO
Eva Golden Orange Ottoman Chair



Artist: Cedric Varcoe

When Ngurunderi travelled through what is now Ngarrindjeri country, he came down the Murray River in his canoe. At that time, it was just a small stream. Ngurunderi was looking for his two wives who had run away from him and was following Pondi, the big Murray cod who had created the twists and turns of the river.



Artist: Paddy Stewart

This design shows the Yam and Bush Tomato Dreaming. You can see the yams and the small round berries of the bush tomatoes. In the Dreamtime the people used to eat these fruits and vegetables, just as our old people lived off them. The artist painted this painting to teach the children.



Alice Mist Grey

OD-ALMB-MG
Alice Medium Back Mist Grey Chair

OD-ALHB-MG
Alice High Back Mist Grey Chair



Katherine Mist Grey

OD-KAMB-MG
Katherine Medium Back Mist Grey Chair

OD-KAHB-MG
Katherine High Back Mist Grey Chair



Eva Mist Grey

OD-EVOT-R45-MG
Eva Mist Grey Ottoman Chair



Artist: Mary Napangardi Brown

This painting depicts linear pattern 'body paint design'. The Aboriginal women paint their breasts and shoulders for ceremonies, which include song and dance used to tell their ancient stories. The concentric circles symbolise ceremonies or meeting place.

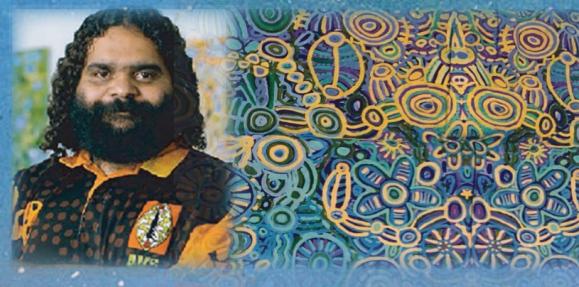
Our Artists



Stephen Jupurrula Nelson



Damien & Yilpi Marks



Cedric Varcoe



Mary Napangardi Brown



Paddy Stewart



Working for Reconciliation & Closing the Gap